

VICINITY MAP
(Not To Scale)



APPROVALS

KITTITAS COUNTY DEPARTMENT OF PUBLIC WORKS
I HEREBY CERTIFY that the Palomino Fields Plat - Division II, has been examined by me and I approve this plat.
Dated this Day of A.D., 2019.
Kittitas County Engineer

HEALTH DEPARTMENT
I HEREBY CERTIFY that the Palomino Fields Plat - Division II, has been examined by me and I find that the sewage and water system herein shown does meet and comply with all requirements of the County Health Dept.
Dated this Day of A.D., 2019.
Kittitas County Health Officer

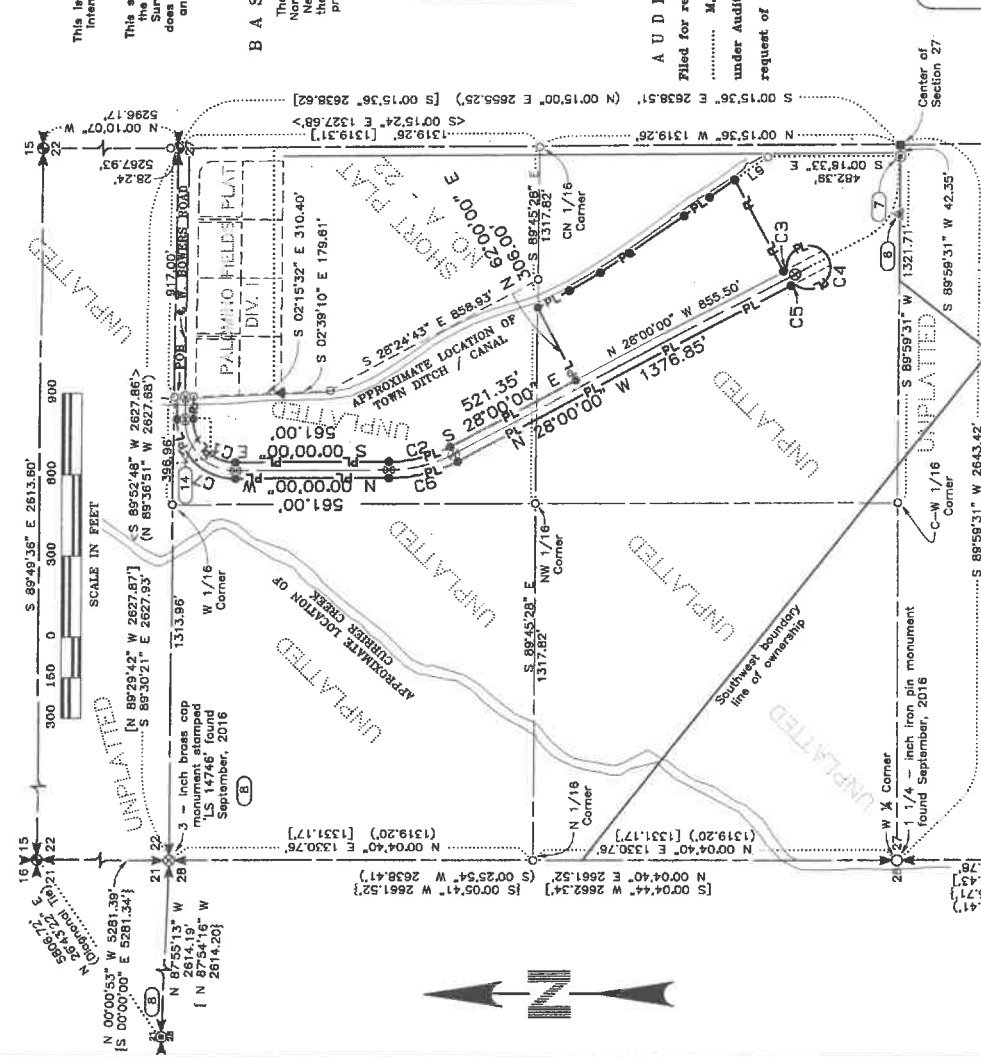
CERTIFICATE OF PLANNING DEPT.
I HEREBY CERTIFY that the Palomino Fields Plat - Division II, has been examined by me and I find that the plat meets the requirements of the Comprehensive Plan of the Kittitas County Planning Commission.
Dated this Day of A.D., 2019.
Kittitas County Planning Official

CERTIFICATE OF TREASURER
I HEREBY CERTIFY that the taxes and assessments are paid for the preceding years and for this year in which the plat is now to be filed. Parcel No. 471083.
Dated this Day of A.D., 2019.
Kittitas County Treasurer

CERTIFICATE OF ASSESSOR
I HEREBY CERTIFY that the Palomino Fields Plat - Division II, has been examined by me and I find that the property to be in an acceptable condition for platting.
Parcel No's. 471035, 11801, and 11802.
Dated this Day of A.D., 2019.
Kittitas County Assessor

KITTITAS COUNTY BOARD OF COMMISSIONERS
EXAMINED AND APPROVED this day of A.D., 2019.
BOARD OF COUNTY COMMISSIONERS
By
Chairperson
ATTEST:
Clerk of the Board

PALOMINO FIELDS PLAT - DIVISION II
A PTN. OF THE E 1/2 OF THE NW 1/4 OF SECTION 27, TOWNSHIP 18 NORTH, RANGE 18 EAST, W.M.
KITTITAS COUNTY, WASHINGTON



NOTICE
This is a Boundary Line Survey and as such is not intended to show, delineate, or establish any easements and encumbrances.

This survey was prepared for the exclusive use of the person, persons, or entity named in the title hereof. No other person or entity is intended to be benefited by this survey and no right or interest does not extend to any person or entity other than an expressed recertification by the Surveyor naming said person.

BASIS OF BEARINGS

The bearing for the east boundary line of the Northwest quarter of Section 27 equal Cruise & Nelson's bearing of South 00°15'36" East for the same line as shown on the F.H.A. U.S.D.A. property survey found under Kittitas County's Auditor File No. 189702200014

LINE TABLE

LINE	BEARING	DISTANCE
L1	S 89°52'48" E	136.01
L2	S 89°52'48" E	136.01
L3	S 89°52'48" E	136.01
L4	S 89°52'48" E	136.01
L5	S 89°52'48" E	136.01
L6	S 89°52'48" E	136.01
L7	S 89°52'48" E	136.01
L8	S 89°52'48" E	136.01
L9	S 89°52'48" E	136.01

AUDITOR'S CERTIFICATE
Filed for record this day of 2019, at M. in Book of Surveys at Page(e) under Auditor's File Number at the request of Western Pacific Engineering & Survey, Inc.

County Auditor
Deputy County Auditor

INSTRUMENT USED

Trimble R10 GPS Receivers	INDEXING DATA
Traverse Closure	
Meals Slenderds Per WAC 332-130-090	527 T18N R18E

WESTERN PACIFIC ENGINEERING & SURVEY
A TERRA DEVELOPMENT SERVICES CORPORATION
1328 E. Hunter Place, Moses Lake, Washington
T(509)765-1022 F(509)765-1286
Send in Washington and Idaho

ICU, INC.
Surveyed by LMH Scale 1" = 300'
Drawn by Tml/FCS Sheet 1 of 5
Checked by FCS Project No. 18146

SURVEYOR'S CERTIFICATE
I hereby certify that the Palomino Fields Plat - Division II plat is based on an actual survey and subdivision of the Northwest quarter of Section 27, Township 18 North, Range 18 East, W.M.; that the distances, angles, courses and bearings shown on this plat are correct; that the monuments have been set; and lot and block corners staked on the ground.



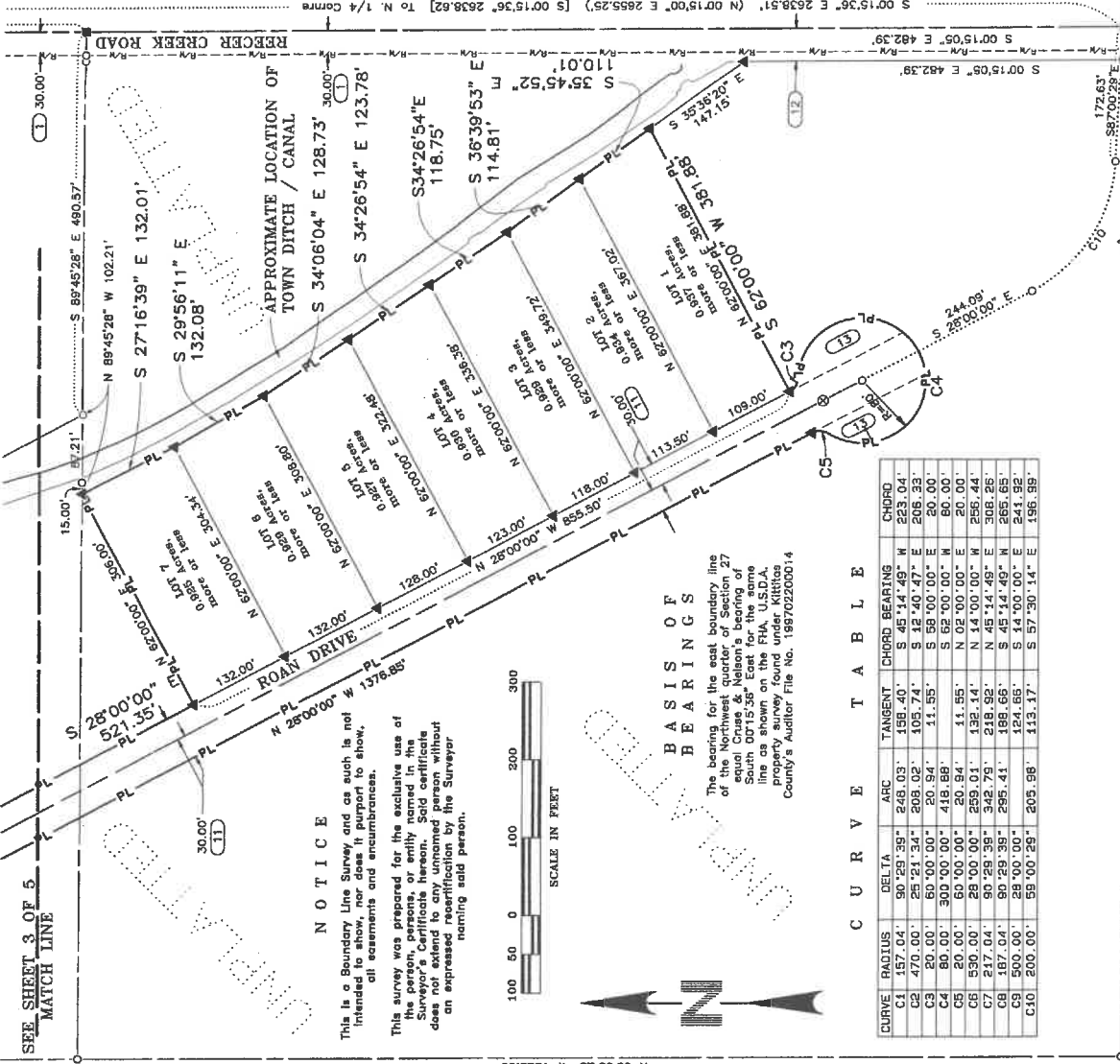
Frederick C. Skinner
Frederick C. Skinner, P.E./P.L.S.
Washington Land Surveyor No. 12494
WESTERN PACIFIC ENGINEERING
PLANNING AND SURVEYING PROFESSIONAL CENTER
1328 Hunter Place
Moses Lake, Washington 98837

1 - 1/4 inch iron pin monument found September, 2016
2 - 1/4 inch iron pin monument found September, 2016
3 - 3/8 inch brass cap monument stamped 'LS 14746' found September, 2016
4 - 1/4 inch iron pin monument found September, 2016
5 - 1/4 inch iron pin monument found September, 2016
6 - 1/4 inch iron pin monument found September, 2016
7 - 1/4 inch iron pin monument found September, 2016
8 - 1/4 inch iron pin monument found September, 2016
9 - 1/4 inch iron pin monument found September, 2016
10 - 1/4 inch iron pin monument found September, 2016
11 - 1/4 inch iron pin monument found September, 2016
12 - 1/4 inch iron pin monument found September, 2016
13 - 1/4 inch iron pin monument found September, 2016
14 - 1/4 inch iron pin monument found September, 2016
15 - 1/4 inch iron pin monument found September, 2016
16 - 1/4 inch iron pin monument found September, 2016
17 - 1/4 inch iron pin monument found September, 2016
18 - 1/4 inch iron pin monument found September, 2016
19 - 1/4 inch iron pin monument found September, 2016
20 - 1/4 inch iron pin monument found September, 2016
21 - 1/4 inch iron pin monument found September, 2016
22 - 1/4 inch iron pin monument found September, 2016
23 - 1/4 inch iron pin monument found September, 2016
24 - 1/4 inch iron pin monument found September, 2016
25 - 1/4 inch iron pin monument found September, 2016
26 - 1/4 inch iron pin monument found September, 2016
27 - 1/4 inch iron pin monument found September, 2016
28 - 1/4 inch iron pin monument found September, 2016
29 - 1/4 inch iron pin monument found September, 2016
30 - 1/4 inch iron pin monument found September, 2016
31 - 1/4 inch iron pin monument found September, 2016
32 - 1/4 inch iron pin monument found September, 2016
33 - 1/4 inch iron pin monument found September, 2016
34 - 1/4 inch iron pin monument found September, 2016
35 - 1/4 inch iron pin monument found September, 2016
36 - 1/4 inch iron pin monument found September, 2016
37 - 1/4 inch iron pin monument found September, 2016
38 - 1/4 inch iron pin monument found September, 2016
39 - 1/4 inch iron pin monument found September, 2016
40 - 1/4 inch iron pin monument found September, 2016
41 - 1/4 inch iron pin monument found September, 2016
42 - 1/4 inch iron pin monument found September, 2016
43 - 1/4 inch iron pin monument found September, 2016
44 - 1/4 inch iron pin monument found September, 2016
45 - 1/4 inch iron pin monument found September, 2016
46 - 1/4 inch iron pin monument found September, 2016
47 - 1/4 inch iron pin monument found September, 2016
48 - 1/4 inch iron pin monument found September, 2016
49 - 1/4 inch iron pin monument found September, 2016
50 - 1/4 inch iron pin monument found September, 2016
51 - 1/4 inch iron pin monument found September, 2016
52 - 1/4 inch iron pin monument found September, 2016
53 - 1/4 inch iron pin monument found September, 2016
54 - 1/4 inch iron pin monument found September, 2016
55 - 1/4 inch iron pin monument found September, 2016
56 - 1/4 inch iron pin monument found September, 2016
57 - 1/4 inch iron pin monument found September, 2016
58 - 1/4 inch iron pin monument found September, 2016
59 - 1/4 inch iron pin monument found September, 2016
60 - 1/4 inch iron pin monument found September, 2016
61 - 1/4 inch iron pin monument found September, 2016
62 - 1/4 inch iron pin monument found September, 2016
63 - 1/4 inch iron pin monument found September, 2016
64 - 1/4 inch iron pin monument found September, 2016
65 - 1/4 inch iron pin monument found September, 2016
66 - 1/4 inch iron pin monument found September, 2016
67 - 1/4 inch iron pin monument found September, 2016
68 - 1/4 inch iron pin monument found September, 2016
69 - 1/4 inch iron pin monument found September, 2016
70 - 1/4 inch iron pin monument found September, 2016
71 - 1/4 inch iron pin monument found September, 2016
72 - 1/4 inch iron pin monument found September, 2016
73 - 1/4 inch iron pin monument found September, 2016
74 - 1/4 inch iron pin monument found September, 2016
75 - 1/4 inch iron pin monument found September, 2016
76 - 1/4 inch iron pin monument found September, 2016
77 - 1/4 inch iron pin monument found September, 2016
78 - 1/4 inch iron pin monument found September, 2016
79 - 1/4 inch iron pin monument found September, 2016
80 - 1/4 inch iron pin monument found September, 2016
81 - 1/4 inch iron pin monument found September, 2016
82 - 1/4 inch iron pin monument found September, 2016
83 - 1/4 inch iron pin monument found September, 2016
84 - 1/4 inch iron pin monument found September, 2016
85 - 1/4 inch iron pin monument found September, 2016
86 - 1/4 inch iron pin monument found September, 2016
87 - 1/4 inch iron pin monument found September, 2016
88 - 1/4 inch iron pin monument found September, 2016
89 - 1/4 inch iron pin monument found September, 2016
90 - 1/4 inch iron pin monument found September, 2016
91 - 1/4 inch iron pin monument found September, 2016
92 - 1/4 inch iron pin monument found September, 2016
93 - 1/4 inch iron pin monument found September, 2016
94 - 1/4 inch iron pin monument found September, 2016
95 - 1/4 inch iron pin monument found September, 2016
96 - 1/4 inch iron pin monument found September, 2016
97 - 1/4 inch iron pin monument found September, 2016
98 - 1/4 inch iron pin monument found September, 2016
99 - 1/4 inch iron pin monument found September, 2016
100 - 1/4 inch iron pin monument found September, 2016

PALOMINO FIELDS PLAT -- DIVISION II

A PTN. OF THE E 1/2 OF SECTION 27, TOWNSHIP 18 NORTH, RANGE 18 EAST, W.M. KITITAS COUNTY, WASHINGTON

SEE SHEET 3 OF 5
MATCH LINE



NOTICE

This is a Boundary Line Survey and as such is not intended to show, nor does it purport to show, all easements and encumbrances.

This survey was prepared for the exclusive use of the person, persons, or entity named in the Surveyor's Certificate hereon. Said certificate does not extend to any unnamed person without an express reference to the Surveyor naming said person.

BASIS OF BEARINGS

The bearing for the east boundary line of the West 1/2 of Section 27, South 00°15'38" East for the same line as shown on the F.H.A. U.S.D.A. property survey found under Kititas County's Auditor File No. 199702200014

C U R V E T A B L E

CURVE	RADIUS	DELTA	ARC	TANGENT	CHORD BEARING	CHORD
C1	157.04'	90.29'.39"	248.03'	S 45°14'.49" W	223.04'	
C2	470.00'	25.21'.34"	208.02'	S 12°40'.47" E	206.33'	
C3	80.00'	60.00'.00"	20.94'	S 69°00'.00" E	20.00'	
C4	80.00'	300.00'.00"	418.88'	S 62°00'.00" E	80.00'	
C5	20.00'	60.00'.00"	20.94'	S 69°00'.00" E	20.00'	
C6	536.00'	28.00'.39"	259.01'	S 14°00'.00" W	256.44'	
C7	217.04'	90.29'.39"	248.03'	S 45°14'.49" E	223.04'	
C8	500.00'	28.60'.00"	285.41'	S 45°14'.49" E	285.85'	
C9	500.00'	28.60'.00"	285.41'	S 45°14'.49" E	285.85'	
C10	200.00'	59.00'.29"	205.98'	S 57°30'.14" E	136.95'	

To West 1/4 Corner N 89°59'31" E 2843.42'
Center of Section 27 N 00°15'36" W 1.82'

- L E G E N D
- 5/8 - inch iron pin with surveyor's cap marked "LS 12491" monument set May, 2018
 - 3 - inch brass cap monument found September, 2016
 - 5/8 - inch aluminum surveyor's cap monument stamped "Kititas County" found September, 2016
 - ⊗ 2 - inch brass cap monument stamped "LS 12491" ground in a 2-inch pipe set in a monument case 9/11/2016
 - △ 5/8 - inch iron pin with surveyor's cap stamped "12491" monument found September 2016
 - ▲ 5/8 - inch iron pin with surveyor's cap stamped "18092" monument found September 2016
 - ⊙ 5/8 - inch iron pin with no surveyor's cap monument found September 2016
 - 1 - inch iron pin with no surveyor's cap monument found September 2016
 - Railroad spike monument found September 2016
 - ◆ 5/8 - inch iron pin with surveyor's cap marked "LS 49273" monument set July 11, 2017
 - ▲ 5/8 - inch iron pin with surveyor's cap marked "LS 12491" monument found February, 2019
 - Calculated point only
 - () — no monument found or set
 - () Previously recorded information from Preston Shultz, Shultz Plot #2, and shown on drawing Kititas County's Auditor File No. 418140 as found under Kititas County's
 - [] Previously recorded information from Record of Survey drawing as found under Kititas County's AFN 199702200014
 - < > Previously recorded information from Record of Survey drawing as found under Kititas County's AFN 199702200014
 - < > Previously recorded information from Record of Survey drawing as found under Kititas County's AFN 199702200014
 - < > Previously recorded information from Statutory Survey drawing as found under Kititas County's AFN 418766
- Note - See Sheet 4 of 5
- Parent Parcel - Parcel boundary line as contained within the PROPERTY DESCRIPTION AS RESULT OF SURVEY description

WESTERN PACIFIC ENGINEERING & SURVEY
A TERRA DEVELOPMENT SERVICES CORPORATION
1328 E. Hunter Place, Moses Lake, Washington
T: (509) 765-1023 F: (509) 765-1288
Services in Washington and Idaho

LCU, INC.
Surveyed by LMH
Drawn by Tm/ FCS
Checked by FCS
Scale 1" = 100'
Sheet 2 of 5
Project No. 18145

INSTRUMENT USED
Trimble R10 GPS Receivers
Trevise Closure
Maple Standards
WAC 352-156-090 527 118N R18E

INDEXING DATA

FREDECK C. WASHINGTON
STATE OF WASHINGTON
JULY 11 1878

PALOMINO FIELDS PLAT - DIVISION II

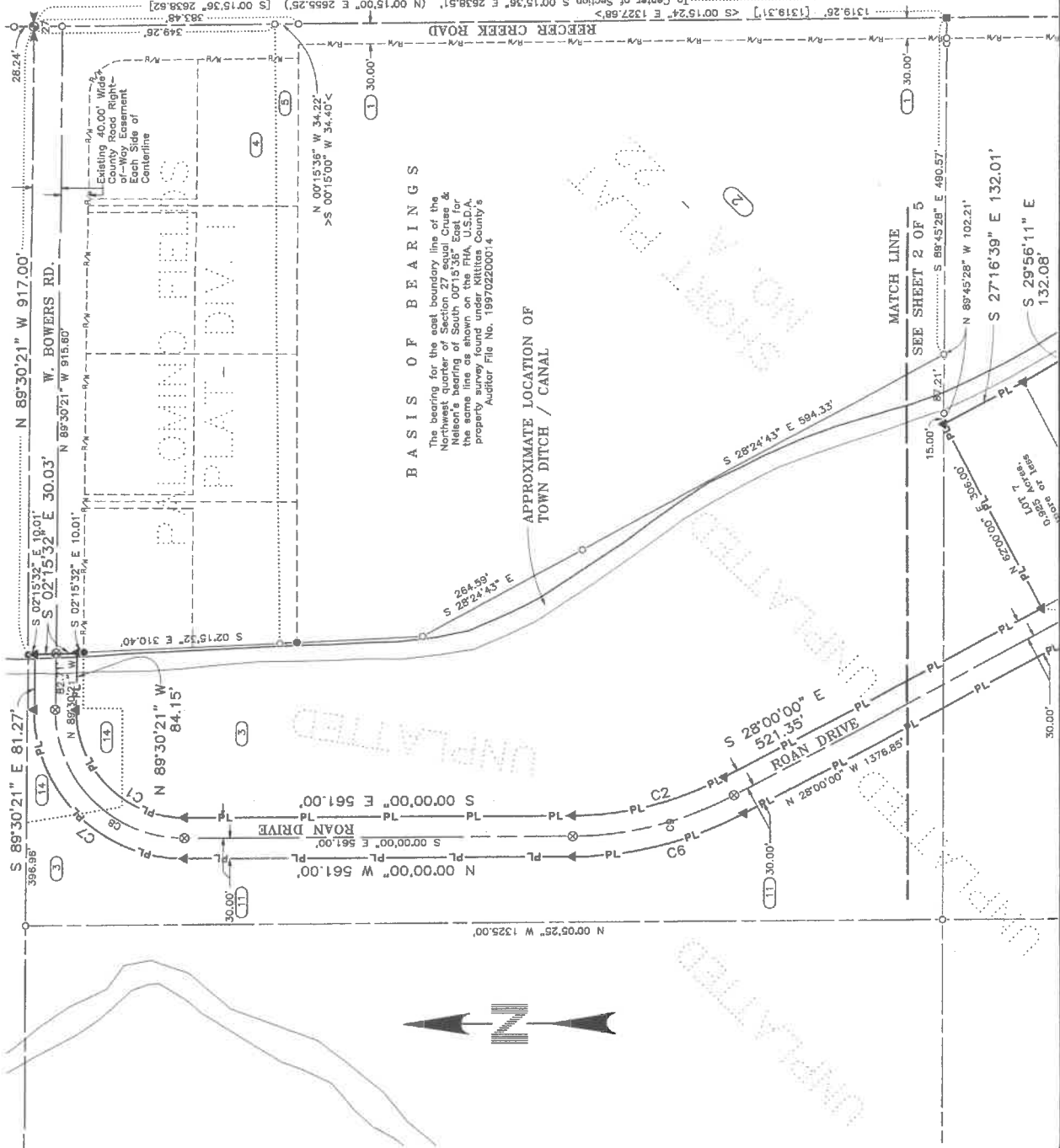
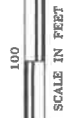
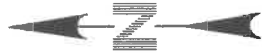
A PTN. OF THE E 1/2 OF THE NW 1/4 OF SECTION 27, TOWNSHIP 18 NORTH, RANGE 18 EAST, W.M.
KITITAS COUNTY, WASHINGTON

181827

NOTICE

This is a Boundary Line Survey and as such is not intended to show, nor does it purport to show, all easements and encumbrances.

This survey was prepared for the exclusive use of the person, persons, or entity named in the Surveyor's Certificate hereon. Said certificate does not extend to any unnamed person without an expressed recertification by the Surveyor naming said person.



BASIS OF BEARINGS
The bearing for the east boundary line of the Northwest quarter of Section 27 equal Chute & bearing South of the same line for the same line shown on the P.L.A. U.S.D. A property survey found under Kittitas County's Auditor File No. 199702200014.



INSTRUMENT USED
Trimble R10 GPS Receivers
Traverse Closure
Nets Standards
WAC 532-130-089

INDEXING DATA
S27 T18N R18E

WESTERN PACIFIC ENGINEERING & SURVEY
A TERRA DEVELOPMENT SERVICES CORPORATION
1328 E. Hunter Place, Moses Lake, Washington
T:(509)765-1023 F:(509)765-1298
Services in Washington and Idaho

LCU, INC.
Surveyed by: LMH Scale 1" = 100'
Drawn by: Tm/ ECS Sheet 5 of 5
Checked by: PCS Project No. 18146

PALOMINO FIELDS PLAT - DIVISION II

A PTN. OF THE E 1/2 OF THE NW 1/4 OF SECTION 27, TOWNSHIP 18 NORTH, RANGE 18 EAST, W.M. KITTITAS COUNTY, WASHINGTON

PLAT NOTES

- Existing thirty-foot Right-of-Way Easement. County Road
- The short plat name is shown on top of the short plat developed by Mr. Leroy J. Preston in November, 1977, to be filed under the Kittitas County Auditor's File Number 418140.
- Tract 1 as described in the property description as listed as being a portion of the Original Property Description as shown on Sheet 5 of 5.
- Tract 4 as described in the property description as listed as being a portion of Tract 4 of the Original Property Description as shown on Sheet 5 of 5.
- Tract 5 as described in the property description as listed as being a portion of Tract 5 of the Original Property Description as shown on Sheet 5 of 5.
- Found a 5/8-inch iron pin N 17°22'28" E a distance of 0.76' from the calculated position of this property corner.
- Found a 5/8-inch iron pin without surveyor's cap south a distance of 0.3' from the calculated position of the property line.
- Land Corner Record for Section Corner is filed with the Kittitas County Auditor's Office under the Auditor's File Number 538434.
- Land Corner Record for Section Corner is filed with the Kittitas County Auditor's Office under the Auditor's File Number 199812150012.
- Land Corner Record for Section Corner is filed with the Kittitas County Auditor's Office under the Auditor's File Number 199812150013.
- A thirty-foot (30.00') wide County Road Right-of-Way Easement dedicated via this plat.
- County Road Right-of-Way Easement as detailed on the Record of Survey filed in Book 22 of Surveys, Page 174, Kittitas County Auditor's File No. 197028200914.

GENERAL NOTES

- As Per RCW 17.10.140, landowner are responsible for the controlling and preventing the spread of noxious weeds. Accordingly, the Kittitas County Noxious Weed Board recommends immediate rereading of areas disturbed development to preclude the proliferation of noxious weeds.
- Construction of access improvements will require obtaining an access permit from the Department of Public Works. All access improvements shall be completed in accordance with current Kittitas County Road standards prior to issuance of a building occupancy permit for any proposed lots.
- An easement of ten feet in width is reserved along all parcel lot lines. The ten foot easement shall about the exterior plot boundaries and shall be divided five feet each side of the interior lot lines. Said easement shall be for public utilities, gas, irrigation, and cable television.
- Subdivision Guarantees No. 72155-46703752, as provided by Chicago Title Insurance Company. All easements from said Subdivision Guarantees have been reviewed, those with a plottable location have been shown on face of plat.

PROPERTY DESCRIPTION

TRACT 4: That portion of the Northwest Quarter of the Northwest Quarter lying East of the center line of the channel of Reecer Creek located in October 3, 1987, in Section 27, Township 18 North Range 18 East, W.M., in the County of Kittitas, State of Washington.

The Northeast Quarter of the Northwest Quarter of Section 27, in Township 18 North, Range 18 East, W.M., in the County of Kittitas, State of Washington; EXCEPTING THEREFROM:

A tract of land bounded by a line described as follows: Commencing at the Northeast corner of the Northwest Quarter of said Section 27; and running thence South 45° West, 1,321.15 feet; thence North 89°35' West, 500 feet; thence North 27°47' West, 858 feet; thence North 82° West, 679 feet; thence North 59°50' East, 79.6 feet; thence East 82°17' West, 543.76 feet; thence South 354.09 feet to the point of commencement.

The right-of-way of the canal of the Ellensburg Water Company (Town Ditch).

TRACT 4: That portion of the Northeast Quarter of the Northwest Quarter of Section 27, Township 18 North, Range 18 East W.M., County of Kittitas, State of Washington, described as follows:

A tract of land bounded by a line beginning at the Northeast corner of said quarter of quarter of section 27, Township 18 North, Range 18 East, W.M., County of Kittitas, State of Washington, and running thence South 0°15' West along the East boundary line of said quarter of quarter section, 377.5 feet; thence West 904.7 feet; thence North 2°02' West 377.5 feet to the North boundary line of said section; and thence South 89.39' East along said North boundary line 917.0 feet to the point of beginning.

EXCEPTING THEREFROM the right-of-way for the County Road known as Reecer Creek Road.

AND EXCEPTING THEREFROM the right-of-way of the Ellensburg Water Company Canal.

TRACT 5: That portion of the Northeast Quarter of the Northwest Quarter of Section 27, Township 18 North, Range 18 East, W.M., County of Kittitas, State of Washington, described as follows:

A tract of land bounded by a line beginning at the Northeast corner of the Northeast Quarter of the Northwest Quarter of said section; thence South 00°15'00" West along the East boundary line of said quarter of quarter section a distance of 377.5 feet to the East boundary line; thence South 00°15'00" West along the East boundary line, a distance of 34.40 feet; thence North 89°24'55" West a distance of 903.64 feet; thence North 02°11'00" West a distance of 25.19 feet; thence South 50°00'00" East a distance of 904.70 feet to the true point of beginning.

EXCEPTING THEREFROM the right-of-way for the County Road known as Reecer Creek Road.

AND EXCEPTING THEREFROM the right-of-way of the Ellensburg Water Company Canal.

NOTICE

This is a Boundary Line Survey and as such is not intended to show, nor does it purport to show, all easements and encumbrances.

This survey was prepared for the exclusive use of the person, persons, or entity named in the Surveyor's Certificate hereon. Said certificate does not constitute a representation or warranty on an expressed recertification by the Surveyor naming said person.



INSTRUMENT USED		INDEXING DATA	
Trimble R10 GPS Receivers			
Traverse Closure Meets Standards Per WAC 332-130-090			527 T18N R18E

WESTERN PACIFIC ENGINEERING & SURVEY
 A TERRA DEVELOPMENT SERVICES CORPORATION
 1328 1st Avenue, Suite 100, Bellingham, WA 98225
 Tel: (360) 765-1023 Fax: (360) 765-1259
 Services in Washington and Idaho

LCU, INC.
 Surveyed by LMH Scale 1" = N/A
 Drawn by Tml/FCS Sheet 4 of 5
 Checked by FCS Project No. 18146

SURVEYOR'S NARRATIVE

Historically two different locations of the north quarter corner of Section 27 Township 18 North, Range 18 East, W.M. have been recorded. The short plat recorded under Kittitas County Auditor's File Number 418140, which was recorded subsequently, was removed possibly under a deed reconstruction. In 1991 via the survey recorded under Kittitas Co. Auditor's File Number 598177, a nail and washer was set with a note that Kittitas Co. Public Works will set a monument peg with future road maintenance in the vicinity. The location of these two monuments differ by 28.24 feet.

The 3-inch brass cap monument found at the intersection of Reecer Creek Road and Bowers Road was held to establish the location of the north quarter corner of Section 27. By holding this monument property on the north side, the line had the fewest apparent negative impacts, while the property immediately on the south side absorbed all the decrease in size. In addition, most performed subsequent to the placement on this monument as the location of the north quarter corner.

However, the 1977 monument location was held for the purposes of locating the following three parcels:

- Kittitas Co. Short Plat No. A-22 recorded under AFN 418140
- Tract 1 of Statutory Warranty Deed recorded under AFN 201440160051
- Tract 2 of Statutory Warranty Deed recorded under AFN 201440160081

In addition, other monuments and fence lines were used to help confirm the boundaries of said Short Plat.

The west quarter corner of Section 27 recorded on said Auditor's File Number 418140, was calculated. However, an adjacent survey to west, a 1-1/4 inch iron pipe was found and accepted as said west quarter corner. During this survey said 1-1/4 inch iron pipe was found and accepted as said west quarter corner.

The county road right of way for Reecer Creek Road has been defined differently by various plats along Reecer Creek Road. After contacting Kittitas County and doing independent surveys, the location of the right-of-way was established. Thereafter with no other evidence for this survey, the centerline of the county road known as Reecer Creek was defined in the northeast quarter of the northwest quarter of Section 27, as coincident with the east boundary of the north quarter of Section 27. The location of the centerline matches that of said Auditor's File Number 418140.

The remaining exterior property boundary lines are identified on Sheet 1 of 5 as per the property description contained on the plat. The location of said property owns addition adjoining property in this general.

PALOMINO FIELDS PLAT - DIVISION II

A PTN. OF THE E 1/2 OF THE NW 1/4 OF SECTION 27, TOWNSHIP 18 NORTH, RANGE 18 EAST, W.M.
KITITAS COUNTY, WASHINGTON

PLATTED PARCEL PROPERTY DESCRIPTION (As Result of Survey)

The portion of the east half of the Northwest quarter of Section 27, Township 18 North, Range 18 East, Kititas County, Washington, as delineated by the Palomino Fields Plat - Division II, drawings prepared by Western Pacific Engineering and Survey, Inc., dated March 2019, and as described as follows:

Commencing at a 3 - inch brass cap monument at the northeast corner of the northwest quarter of said Section 27; thence North 89°30'21" West, coincident with the north boundary line of the northwest quarter of said Section, a distance of 817.00 feet to a point on the north boundary line of the PALOMINO FIELDS PLAT - DIVISION II, as shown in Volume 12 of Plats, Pages 201 through 205, under the Kititas County Plat Number: 2017081500145, said point bears South 89°30'21" East, coincident with the north boundary line of the northwest quarter of said Section 27, a distance of 1710.82 feet from a found 3 - inch brass cap monument accepted as the northwest corner of the northwest quarter of said Section 27, thence North 02°15'32" East, a distance of 80.09 feet to the northwest corner of Lot 1 of said Palomino Fields Plat - Division II; thence South 02°15'32" East a distance of 10.04 feet to the POINT OF BEGINNING;

thence continuing South 02°15'32" East a distance of 60.07 feet to a point that bears South 02°15'32" West a distance of 10.01 feet from the northwest corner of Lot 1 of said Palomino Fields Plat - Division II; thence North 89°30'21" West a distance of 84.15 feet to the beginning of a curve tangent to said course, of 167.04 feet, coincident with the southeast a distance of 248.03 feet, coincident with the arc of said curve through a central angle of 90°29'39" to the left, the long chord of said curve bears South 45°14'48" West a distance of 223.04 feet; thence North 02°15'32" East a distance of 223.04 feet to the POINT OF BEGINNING;

thence continuing South 02°15'32" East a distance of 554.00 feet to the POINT OF BEGINNING;

said course, said curve's radius point bears South 90°00'00" East a distance of 470.00 feet; thence southerly and southeasterly on a 470.00-foot radius curve concave to the east a distance of 225.69 feet, coincident with the arc of said curve through a central angle of 143°02'00" to the left, the long chord of said curve bears South 14°00'00" East a distance of 322.00 feet; thence South 28°00'00" East, tangent to the aforementioned curve, a distance of 521.35 feet; thence North 62°00'00" East a distance of 305.00 feet; thence South 27°15'39" East a distance of 132.05 feet; thence South 58°59'11" East a distance of 132.05 feet; thence North 62°00'00" East a distance of 132.05 feet; thence South 34°26'54" East a distance of 116.75 feet; thence South 36°39'53" East a distance of 114.81 feet; thence South 35°45'52" East a distance of 110.01 feet; thence South 62°00'00" West a distance of 110.01 feet; thence South 62°00'00" West a distance of 20.00 feet; thence southeasterly and easterly on a 20.00-foot radius curve concave to the northeast a distance of 20.94 feet, coincident with the arc of said curve through a central angle of 60°00'00" to the left, the long chord of said curve bears South 60°00'00" East a distance of 35.00 feet; said point also being the point of reverse curvature for a curve whose radius point bears South 02°00'00" West a distance of 80.00 feet; thence easterly, southeasterly, southerly, southwesterly, westerly, northwesterly, northerly and northeasterly on a 419.98-foot radius curve concave to the northwest a distance of 419.98 feet, coincident with the arc of said curve through a central angle of 300°00'00" to the right, the long chord of said curve bears South 62°00'00" West a distance of 80.00 feet; said point also being the point of reverse curvature for a curve whose radius point bears North 58°00'00" West a distance of 20.00 feet; thence northwesterly, northerly and northeasterly on a

PLATTED PARCEL PROPERTY DESCRIPTION (As Result of Survey)

20.00-foot radius curve concave to the west a distance of 20.94 feet, coincident with the arc of said curve through a central angle of 60°00'00" to the right, the long chord of said curve bears North 02°00'00" East a distance of 35.00 feet; thence North 02°00'00" West, tangent to the aforementioned curve, a distance of 1376.85 feet to the beginning of a curve tangent to said course, said curve's radius point bears North 52°00'00" East a distance of 530.00 feet; thence northeasterly and northerly on a 530.00-foot radius curve concave to the northeast through a central angle of 28°00'00" to the right, the long chord of said curve bears North 14°00'00" West, tangent to the arc of said curve through a distance of 255.44 feet; thence North 00°00'00" West, tangent to the aforementioned curve, a distance of 217.04 feet; thence southeasterly, southerly, southwesterly, westerly, northwesterly, northerly and northeasterly on a 217.04-foot radius curve concave to the southeast a distance of 342.79 feet, coincident with the arc of said curve through a central angle of 89°30'21" to the right, the long chord bears North 89°30'21" East, tangent to the aforementioned curve, a distance of 81.27 feet to the POINT OF BEGINNING;

Containing 10.513 Acres, more or less.

WATER NOTES

On February 8, 2017 Chicago Title and Ellenburg Water Company were contacted to find an initial location of the Palomino Fields Plat - Division II water main. At that time both entities were unable to provide any information to said ditch. The Ellenburg Water Company believes there is at least a prescriptive easement for said ditch but we do not have any documentation to prove this on this survey.

IRRIGATION WATER

1. The Ellenburg Water Company's canal and canal road runs on the eastern edge of this Palomino Fields Plat - Division II. The Palomino Fields Plat - Division II water main is located within the right of way of the Ellenburg Water Company's canal.

2. The Ellenburg Water Company supplies irrigation water to the Palomino Fields Plat - Division II, which the company prescribes and delivers through the Palomino Fields Plat - Division II subdivision within the Palomino Fields Water System, Inc. owns the shares of the Palomino Fields Water System, Inc. owns the shares of the Palomino Fields Water System, Inc. acts as the Meter Master for any and all irrigation water delivered to all parcels within the Palomino Fields Plat - Division II subdivisions. All questions relating to irrigation shall be directed to the Palomino Fields Water System, Inc. and the Meter Master.

NOTICE

This is a Boundary Line Survey and as such is not intended to show, or create, any interests, easements, or encumbrances.

This survey was prepared for the exclusive use of the person or persons, or entity named in the plat. The surveyor's name and the date of the survey do not extend to any unrecorded person without an expressed certification by the Surveyor naming said person.

DEDICATION

DEDICATION KNOW ALL MEN BY THESE PRESENTS, CLE ELUM PINES WEST LLC, a Washington Limited Liability Company, do hereby declare this plat and dedicate to the public forever all roads and ways shown hereon, and the right to make all necessary slopes for cuts and fills, and the right to construct where water might take a natural over and across any lot on lots, where water might take a natural course, in the original reasonable grading of the roads and ways shown hereon. Following original reasonable grading of roads and ways hereon no drainage water on any lot or lots shall be discharged into any public road right-of-way or natural drainage. Any enclosing of drainage waters in culverts or drains or rerouting thereof across any lot as may be undertaken by or for the owner of any lot, shall be done by and at the expense of such owner.

IN WITNESS WHEREOF, we have hereunto set our hands and seal this _____ day of _____, A.D., 2019, CLE ELUM PINE WEST, LLC, A Washington Limited Liability Company
President

ACKNOWLEDGEMENT

STATE OF WASHINGTON) SS
COUNTY OF _____)

On this day of _____, A.D., 2019, before me, the undersigned, a Notary Public in and for the State of Washington, duly commissioned and sworn, personally appeared and acknowledged the said instrument to be the free and voluntary act and deed of _____, who is duly authorized to execute the said instrument and that the seal affixed is the corporate seal of Said Corporation.

WITNESS My hand and official seal the day and year first written.

Notary Public in and for the State of Washington, residing at _____

INSTRUMENT USED Trimble R10 GPS Receivers Traverse Closure Meas Standards Per WAC 352-130-090	INDEXING DATA <table border="1" style="margin: 0 auto; border-collapse: collapse;"> <tr> <td style="width: 20px; height: 20px; text-align: center;">X</td> <td style="width: 20px; height: 20px;"></td> <td style="width: 20px; height: 20px;"></td> <td style="width: 20px; height: 20px;"></td> </tr> <tr> <td style="width: 20px; height: 20px;"></td> <td style="width: 20px; height: 20px;"></td> <td style="width: 20px; height: 20px;"></td> <td style="width: 20px; height: 20px;"></td> </tr> <tr> <td style="width: 20px; height: 20px;"></td> <td style="width: 20px; height: 20px;"></td> <td style="width: 20px; height: 20px;"></td> <td style="width: 20px; height: 20px;"></td> </tr> </table> 527 T18N R18E	X											
X													
WESTERN PACIFIC ENGINEERING & SURVEY A TERRA DEVELOPMENT SERVICES CORPORATION 1326 E. 1st Avenue, West Lakes, Washington 146007165 Telephone: (360) 765-1235 <small>Division in Washington and Idaho</small>													
LCU INC. Surveyed by LMH Scale 1" = N/A Drawn by Tml/FCS Sheet 5 of 5 Checked by _____ Project No. 18148													



Western Pacific Engineering and Survey
 1328 Hunter Place
 Moses Lake, WA
 (509) 765-1023
 Thursday, March 14, 2019 9:35:20 AM

Palomino Field PROJECT: C:\1. Survey Data\18146-Deneen\18146 DIV 2\18146 MP2.pro

GEOMETRY REPORT

Traverse name: DIVISION II, LOT 2

Point Number	Description	Vertical Angle	Northing	Easting
Elevation	Bearing	Distance		
PC354			616130.18643	1621996.94724
	N62°00'00"E	349.72 ft		
PC355			616294.36949	1622305.73066
	S36°39'53"E	114.81 ft		
PC353			616202.27502	1622374.28734
	S62°00'00"W	367.02 ft		
PC352			616029.97188	1622050.23226
	N28°00'00"W	113.50 ft		
PC354			616130.18643	1621996.94724

--

Total Perimeter = 945.04 ft
 Area = 40674.6506 Sq. Ft.
 Area = 0.934 Acres,

Western Pacific Engineering and Survey
 1328 Hunter Place
 Moses Lake, WA
 (509)765-1023
 Thursday, March 14, 2019 9:35:20 AM

Palomino Field PROJECT: C:\1. Survey Data\18146-Deneen\18146 DIV 2\18146 MP2.pro

 GEOMETRY REPORT

Traverse name: PARENT PARCEL - PARCEL BEING PLATTED

Point Number Elevation	Description Bearing Distance	Vertical Angle	Northing	Easting
95	S02°15'32"E 60.07 ft		618147.39224	1621640.17283
42	N89°30'21"W 84.15 ft		618087.36959	1621642.54059
41			618088.09538	1621558.39053
973		Arc Center	617931.06507	1621557.03615
	Radius:	157.04 ft		
	Delta:	90°29'39" Left		
	Arc Length:	248.03 ft		
	Chord Bearing:	S45°14'49"W		
	Chord Length:	223.04 ft		
	Middle Ordinate:	46.47 ft		
	External:	66.01 ft		
	Deg of Curvature:	36°29'09" Arc Definition		
	Tangent:	158.40 ft		
29	S00°00'00"E 561.00 ft		617931.06507	1621400.00000
1050		Arc Center	617370.06507	1621400.00000
972		Arc Center	617370.06507	1621870.00000
	Radius:	470.00 ft		
	Delta:	28°00'00" Left		
	Arc Length:	229.69 ft		
	Chord Bearing:	S14°00'00"E		
	Chord Length:	227.41 ft		
	Middle Ordinate:	13.96 ft		
	External:	14.39 ft		
	Deg of Curvature:	12°11'26" Arc Definition		
	Tangent:	117.18 ft		
PC375	S28°00'00"E 521.35 ft		617149.41343	1621455.01463
PC364			616689.09226	1621699.77174
PC365	N62°00'00"E 306.00 ft		616832.75056	1621969.95370
PC363	S27°16'39"E 132.01 ft		616715.42005	1622030.45429
PC361	S29°56'11"E 132.08 ft		616600.96615	1622096.36500

S34°06'04"E	128.73 ft		
PC359		616494.37200	1622168.53755
S34°26'54"E	123.78 ft		
PC357		616392.29603	1622238.55727
S34°26'54"E	118.75 ft		
PC355		616294.36949	1622305.73066
S36°39'53"E	114.81 ft		
PC353		616202.27502	1622374.28734
S35°45'52"E	110.01 ft		
PC351		616113.01112	1622438.58230
S62°00'00"W	381.88 ft		
PC350		615933.73060	1622101.40466
300		Arc Center	615943.12003 1622119.06361
	Radius:		20.00 ft
	Delta:		60°00'00" Left
	Arc Length:		20.94 ft
	Chord Bearing:		S58°00'00"E
	Chord Length:		20.00 ft
	Middle Ordinate:		2.68 ft
	External:		3.09 ft
	Deg of Curvature:		286°28'44" Arc Definition
	Tangent:		11.55 ft
293			615923.13221 1622118.36562
291		Arc Center	615843.18094 1622115.57367
	Radius:		80.00 ft
	Delta:		300°00'00" Right
	Arc Length:		418.88 ft
	Chord Bearing:		S62°00'00"W
	Chord Length:		80.00 ft
	Middle Ordinate:		0.00 ft
	External:		0.00 ft
	Deg of Curvature:		71°37'11" Arc Definition
	Tangent:		0.00 ft
303			615885.57448 1622047.72982
301		Arc Center	615896.17287 1622030.76886
	Radius:		20.00 ft
	Delta:		60°00'00" Left
	Arc Length:		20.94 ft
	Chord Bearing:		N02°00'00"E
	Chord Length:		20.00 ft
	Middle Ordinate:		2.68 ft
	External:		3.09 ft
	Deg of Curvature:		286°28'44" Arc Definition
	Tangent:		11.55 ft
325			615905.56230 1622048.42781
N28°00'00"W	1376.85 ft		
PC380			617121.24514 1621402.03778
972		Arc Center	617370.06507 1621870.00000
	Radius:		530.00 ft
	Delta:		28°00'00" Right
	Arc Length:		259.01 ft
	Chord Bearing:		N14°00'00"W
	Chord Length:		256.44 ft
	Middle Ordinate:		15.74 ft
	External:		16.23 ft
	Deg of Curvature:		10°48'38" Arc Definition
	Tangent:		132.14 ft

623
N00°00'00"W 561.00 ft

617370.06507 1621340.00000

664
973

617931.06507 1621340.00000

Arc Center 617931.06507 1621557.03615

Radius: 217.04 ft

Delta: 90°29'39" Right

Arc Length: 342.79 ft

Chord Bearing: N45°14'49"E

Chord Length: 308.26 ft

Middle Ordinate: 64.23 ft

External: 91.23 ft

Deg of Curvature: 26°23'57" Arc Definition

Tangent: 218.92 ft

103
S89°30'21"E 81.27 ft

618148.09315 1621558.90801

95

618147.39224 1621640.17283

--

Total Perimeter = 6334.00 ft
Area = 457925.1392 Sq. Ft.
Area = 10.513 Acres,

Western Pacific Engineering and Survey
 1328 Hunter Place
 Moses Lake, WA
 (509)765-1023
 Thursday, March 14, 2019 9:35:21 AM

Palomino Field PROJECT: C:\1. Survey Data\18146-Deneen\18146 DIV 2\18146 MP2.pro

GEOMETRY REPORT

Traverse name: DIVISION II, LOT 4

Point Number	Description	Vertical Angle	Northing	Easting
Elevation	Bearing	Distance		
PC358			616342.97680	1621883.80459
	N62°00'00"E	322.48 ft		
PC359			616494.37200	1622168.53755
	S34°26'54"E	123.78 ft		
PC357			616392.29603	1622238.55727
	S62°00'00"W	336.38 ft		
PC356			616234.37425	1621941.54960
	N28°00'00"W	123.00 ft		
PC358			616342.97680	1621883.80459

Total Perimeter = 905.65 ft
 Area = 40520.0141 Sq. Ft.
 Area = 0.930 Acres,

Western Pacific Engineering and Survey
1328 Hunter Place
Moses Lake, WA
(509)765-1023
Thursday, March 14, 2019 9:35:21 AM

Palomino Field PROJECT: C:\1. Survey Data\18146-Deneen\18146 DIV 2\18146 MP2.pro

GEOMETRY REPORT

Traverse name: DIVISION II, LOT 1

Point Number Elevation	Description Bearing	Vertical Angle Distance	Northing	Easting
PC352			616029.97188	1622050.23226
	N62°00'00"E	367.02 ft		
PC353			616202.27502	1622374.28734
	S35°45'52"E	110.01 ft		
PC351			616113.01112	1622438.58230
	S62°00'00"W	381.88 ft		
PC350			615933.73060	1622101.40466
	N28°00'00"W	109.00 ft		
PC352			616029.97188	1622050.23226

--
Total Perimeter = 967.90 ft
Area = 40814.6339 Sq. Ft.
Area = 0.937 Acres,

Western Pacific Engineering and Survey
1328 Hunter Place
Moses Lake, WA
(509)765-1023
Thursday, March 14, 2019 9:35:21 AM

Palomino Field PROJECT: C:\1. Survey Data\18146-Deneen\18146 DIV 2\18146 MP2.pro

GEOMETRY REPORT

Traverse name: LOT 3

Point Number Elevation	Description Bearing	Vertical Angle Distance	Northing	Easting
PC356			616234.37425	1621941.54960
	N62°00'00"E	336.38 ft		
PC357			616392.29603	1622238.55727
	S34°26'54"E	118.75 ft		
PC355			616294.36949	1622305.73066
	S62°00'00"W	349.72 ft		
PC354			616130.18643	1621996.94724
	N28°00'00"W	118.00 ft		
PC356			616234.37425	1621941.54960

--
Total Perimeter = 922.85 ft
Area = 40479.9506 Sq. Ft.
Area = 0.929 Acres,

Western Pacific Engineering and Survey
1328 Hunter Place
Moses Lake, WA
(509)765-1023
Thursday, March 14, 2019 9:35:21 AM

Palomino Field PROJECT: C:\1. Survey Data\18146-Deneen\18146 DIV 2\18146 MP2.pro

GEOMETRY REPORT

Traverse name: DIVISION II, LOT 5

Point Number Elevation	Description Bearing	Vertical Angle Distance	Northing	Easting
PC360	N62°00'00"E	308.80 ft	616455.99410	1621823.71223
PC361	S34°06'04"E	128.73 ft	616600.96615	1622096.36500
PC359	S62°00'00"W	322.48 ft	616494.37200	1622168.53755
PC358	N28°00'00"W	128.00 ft	616342.97680	1621883.80459
PC360			616455.99410	1621823.71223

--
Total Perimeter = 888.01 ft
Area = 40401.8163 Sq. Ft.
Area = 0.927 Acres,

Western Pacific Engineering and Survey
1328 Hunter Place
Moses Lake, WA
(509)765-1023
Thursday, March 14, 2019 9:35:21 AM

Palomino Field PROJECT: C:\1. Survey Data\18146-Deneen\18146 DIV 2\18146 MP2.pro

GEOMETRY REPORT

Traverse name: LOT 6

Point Number	Description	Vertical Angle	Northing	Easting
Elevation	Bearing	Distance		
PC362			616572.54318	1621761.74199
	N62°00'00"E	304.34 ft		
PC363			616715.42005	1622030.45429
	S29°56'11"E	132.08 ft		
PC361			616600.96615	1622096.36500
	S62°00'00"W	308.80 ft		
PC360			616455.99410	1621823.71223
	N28°00'00"W	132.00 ft		
PC362			616572.54318	1621761.74199

--
Total Perimeter = 877.21 ft
Area = 40466.8355 Sq. Ft.
Area = 0.929 Acres,

Western Pacific Engineering and Survey
 1328 Hunter Place
 Moses Lake, WA
 (509) 765-1023
 Thursday, March 14, 2019 9:35:21 AM

Palomino Field PROJECT: C:\1. Survey Data\18146-Deneen\18146 DIV 2\18146 MP2.pro

 GEOMETRY REPORT

Traverse name: DIVISION II, LOT 7

Point Number Elevation	Description Bearing Distance	Vertical Angle	Northing	Easting
PC364			616689.09226	1621699.77174
	N62°00'00"E 306.00 ft			
PC365			616832.75056	1621969.95370
	S27°16'39"E 132.01 ft			
PC363			616715.42005	1622030.45429
	S62°00'00"W 304.34 ft			
PC362			616572.54318	1621761.74199
	N28°00'00"W 132.00 ft			
PC364			616689.09226	1621699.77174

 --
 Total Perimeter = 874.35 ft
 Area = 40282.1436 Sq. Ft.
 Area = 0.925 Acres,

Western Pacific Engineering and Survey
 1328 Hunter Place
 Moses Lake, WA
 (509) 765-1023
 Thursday, March 14, 2019 9:35:20 AM

Palomino Field PROJECT: C:\1. Survey Data\18146-Deneen\18146 DIV 2\18146 MP2.pro

 GEOMETRY REPORT

Traverse name: DIVISION II, LOT 2

Point Number Elevation	Description Bearing Distance	Vertical Angle	Northing	Easting
PC354	N62°00'00"E	349.72 ft	616130.18643	1621996.94724
PC355	S36°39'53"E	114.81 ft	616294.36949	1622305.73066
PC353	S62°00'00"W	367.02 ft	616202.27502	1622374.28734
PC352	N28°00'00"W	113.50 ft	616029.97188	1622050.23226
PC354			616130.18643	1621996.94724

 --
 Total Perimeter = 945.04 ft
 Area = 40674.6506 Sq. Ft.
 Area = 0.934 Acres,

Western Pacific Engineering and Survey
 1328 Hunter Place
 Moses Lake, WA
 (509)765-1023
 Thursday, March 14, 2019 9:35:20 AM

Palomino Field PROJECT: C:\1. Survey Data\18146-Deneen\18146 DIV 2\18146 MP2.pro

 GEOMETRY REPORT

Traverse name: PARENT PARCEL - PARCEL BEING PLATTED

Point Number Elevation	Description Bearing Distance	Vertical Angle	Northing	Easting
95			618147.39224	1621640.17283
	S02°15'32"E 60.07 ft			
42			618087.36959	1621642.54059
	N89°30'21"W 84.15 ft			
41			618088.09538	1621558.39053
973			617931.06507	1621557.03615
	Radius: 157.04 ft			
	Delta: 90°29'39" Left			
	Arc Length: 248.03 ft			
	Chord Bearing: S45°14'49"W			
	Chord Length: 223.04 ft			
	Middle Ordinate: 46.47 ft			
	External: 66.01 ft			
	Deg of Curvature: 36°29'09" Arc Definition			
	Tangent: 158.40 ft			
29			617931.06507	1621400.00000
	S00°00'00"E 561.00 ft			
1050			617370.06507	1621400.00000
972			617370.06507	1621870.00000
	Radius: 470.00 ft			
	Delta: 28°00'00" Left			
	Arc Length: 229.69 ft			
	Chord Bearing: S14°00'00"E			
	Chord Length: 227.41 ft			
	Middle Ordinate: 13.96 ft			
	External: 14.39 ft			
	Deg of Curvature: 12°11'26" Arc Definition			
	Tangent: 117.18 ft			
PC375			617149.41343	1621455.01463
	S28°00'00"E 521.35 ft			
PC364			616689.09226	1621699.77174
	N62°00'00"E 306.00 ft			
PC365			616832.75056	1621969.95370
	S27°16'39"E 132.01 ft			
PC363			616715.42005	1622030.45429
	S29°56'11"E 132.08 ft			
PC361			616600.96615	1622096.36500

S34°06'04"E	128.73 ft		
PC359		616494.37200	1622168.53755
S34°26'54"E	123.78 ft		
PC357		616392.29603	1622238.55727
S34°26'54"E	118.75 ft		
PC355		616294.36949	1622305.73066
S36°39'53"E	114.81 ft		
PC353		616202.27502	1622374.28734
S35°45'52"E	110.01 ft		
PC351		616113.01112	1622438.58230
S62°00'00"W	381.88 ft		
PC350		615933.73060	1622101.40466
300		615943.12003	1622119.06361
	Radius:	Arc Center	
		20.00 ft	
	Delta:	60°00'00" Left	
	Arc Length:	20.94 ft	
	Chord Bearing:	S58°00'00"E	
	Chord Length:	20.00 ft	
	Middle Ordinate:	2.68 ft	
	External:	3.09 ft	
	Deg of Curvature:	286°28'44" Arc Definition	
	Tangent:	11.55 ft	
293		615923.13221	1622118.36562
291		Arc Center	615843.18094 1622115.57367
	Radius:	80.00 ft	
	Delta:	300°00'00" Right	
	Arc Length:	418.88 ft	
	Chord Bearing:	S62°00'00"W	
	Chord Length:	80.00 ft	
	Middle Ordinate:	0.00 ft	
	External:	0.00 ft	
	Deg of Curvature:	71°37'11" Arc Definition	
	Tangent:	0.00 ft	
303		615885.57448	1622047.72982
301		Arc Center	615896.17287 1622030.76886
	Radius:	20.00 ft	
	Delta:	60°00'00" Left	
	Arc Length:	20.94 ft	
	Chord Bearing:	N02°00'00"E	
	Chord Length:	20.00 ft	
	Middle Ordinate:	2.68 ft	
	External:	3.09 ft	
	Deg of Curvature:	286°28'44" Arc Definition	
	Tangent:	11.55 ft	
325		615905.56230	1622048.42781
N28°00'00"W	1376.85 ft		
PC380		617121.24514	1621402.03778
972		Arc Center	617370.06507 1621870.00000
	Radius:	530.00 ft	
	Delta:	28°00'00" Right	
	Arc Length:	259.01 ft	
	Chord Bearing:	N14°00'00"W	
	Chord Length:	256.44 ft	
	Middle Ordinate:	15.74 ft	
	External:	16.23 ft	
	Deg of Curvature:	10°48'38" Arc Definition	
	Tangent:	132.14 ft	

623
N00°00'00"W 561.00 ft
664
973

617370.06507 1621340.00000

617931.06507 1621340.00000

Arc Center 617931.06507 1621557.03615

Radius: 217.04 ft

Delta: 90°29'39" Right

Arc Length: 342.79 ft

Chord Bearing: N45°14'49"E

Chord Length: 308.26 ft

Middle Ordinate: 64.23 ft

External: 91.23 ft

Deg of Curvature: 26°23'57" Arc Definition

Tangent: 218.92 ft

103
S89°30'21"E 81.27 ft
95

618148.09315 1621558.90801

618147.39224 1621640.17283

--

Total Perimeter = 6334.00 ft
Area = 457925.1392 Sq. Ft.
Area = 10.513 Acres,

Western Pacific Engineering and Survey
 1328 Hunter Place
 Moses Lake, WA
 (509)765-1023
 Thursday, March 14, 2019 9:35:21 AM

Palomino-Field PROJECT: C:\1. Survey Data\18146-Deneen\18146 DIV 2\18146 MP2.pro

 GEOMETRY REPORT

Traverse name: DIVISION II, LOT 4

Point Number Elevation	Description Bearing Distance	Vertical Angle	Northing	Easting
PC358			616342.97680	1621883.80459
	N62°00'00"E 322.48 ft			
PC359			616494.37200	1622168.53755
	S34°26'54"E 123.78 ft			
PC357			616392.29603	1622238.55727
	S62°00'00"W 336.38 ft			
PC356			616234.37425	1621941.54960
	N28°00'00"W 123.00 ft			
PC358			616342.97680	1621883.80459

 --
 Total Perimeter = 905.65 ft
 Area = 40520.0141 Sq. Ft.
 Area = 0.930 Acres,

Western Pacific Engineering and Survey
1328 Hunter Place
Moses Lake, WA
(509)765-1023
Thursday, March 14, 2019 9:35:21 AM

Palomino Field PROJECT: C:\1. Survey Data\18146-Deneen\18146 DIV 2\18146 MP2.pro

GEOMETRY REPORT

Traverse name: DIVISION II, LOT 1

Point Number Elevation	Description Bearing	Vertical Angle Distance	Northing	Easting
PC352			616029.97188	1622050.23226
	N62°00'00"E	367.02 ft		
PC353			616202.27502	1622374.28734
	S35°45'52"E	110.01 ft		
PC351			616113.01112	1622438.58230
	S62°00'00"W	381.88 ft		
PC350			615933.73060	1622101.40466
	N28°00'00"W	109.00 ft		
PC352			616029.97188	1622050.23226

--
Total Perimeter = 967.90 ft
Area = 40814.6339 Sq. Ft.
Area = 0.937 Acres,

Western Pacific Engineering and Survey
 1328 Hunter Place
 Moses Lake, WA
 (509)765-1023
 Thursday, March 14, 2019 9:35:21 AM

Palomino Field PROJECT: C:\1. Survey Data\18146-Deneen\18146 DIV 2\18146 MP2.pro

 GEOMETRY REPORT

Traverse name: LOT 3

Point Number Elevation	Description Bearing Distance	Vertical Angle	Northing	Easting
PC356			616234.37425	1621941.54960
	N62°00'00"E 336.38 ft			
PC357			616392.29603	1622238.55727
	S34°26'54"E 118.75 ft			
PC355			616294.36949	1622305.73066
	S62°00'00"W 349.72 ft			
PC354			616130.18643	1621996.94724
	N28°00'00"W 118.00 ft			
PC356			616234.37425	1621941.54960

 --
 Total Perimeter = 922.85 ft
 Area = 40479.9506 Sq. Ft.
 Area = 0.929 Acres,

Western Pacific Engineering and Survey
1328 Hunter Place
Moses Lake, WA
(509)765-1023
Thursday, March 14, 2019 9:35:21 AM

Palomino Field PROJECT: C:\1. Survey Data\18146-Deneen\18146 DIV 2\18146 MP2.pro

GEOMETRY REPORT

Traverse name: DIVISION II, LOT 5

Point Number Elevation	Description Bearing	Vertical Angle Distance	Northing	Easting
PC360			616455.99410	1621823.71223
	N62°00'00"E	308.80 ft		
PC361			616600.96615	1622096.36500
	S34°06'04"E	128.73 ft		
PC359			616494.37200	1622168.53755
	S62°00'00"W	322.48 ft		
PC358			616342.97680	1621883.80459
	N28°00'00"W	128.00 ft		
PC360			616455.99410	1621823.71223

--
Total Perimeter = 888.01 ft
Area = 40401.8163 Sq. Ft.
Area = 0.927 Acres,

Western Pacific Engineering and Survey
1328 Hunter Place
Moses Lake, WA
(509)765-1023
Thursday, March 14, 2019 9:35:21 AM

Palomino Field PROJECT: C:\1. Survey Data\18146-Deneen\18146 DIV 2\18146 MP2.pro

GEOMETRY REPORT

Traverse name: LOT 6

Point Number	Description	Vertical Angle	Northing	Easting
	Bearing	Distance		
PC362			616572.54318	1621761.74199
	N62°00'00"E	304.34 ft		
PC363			616715.42005	1622030.45429
	S29°56'11"E	132.08 ft		
PC361			616600.96615	1622096.36500
	S62°00'00"W	308.80 ft		
PC360			616455.99410	1621823.71223
	N28°00'00"W	132.00 ft		
PC362			616572.54318	1621761.74199

--
Total Perimeter = 877.21 ft
Area = 40466.8355 Sq. Ft.
Area = 0.929 Acres,

Western Pacific Engineering and Survey
1328 Hunter Place
Moses Lake, WA
(509)765-1023
Thursday, March 14, 2019 9:35:21 AM

Palomino Field PROJECT: C:\1. Survey Data\18146-Deneen\18146 DIV 2\18146 MP2.pro

GEOMETRY REPORT

Traverse name: DIVISION II, LOT 7

Point Number Elevation	Description Bearing	Vertical Angle Distance	Northing	Easting
PC364			616689.09226	1621699.77174
	N62°00'00"E	306.00 ft		
PC365			616832.75056	1621969.95370
	S27°16'39"E	132.01 ft		
PC363			616715.42005	1622030.45429
	S62°00'00"W	304.34 ft		
PC362			616572.54318	1621761.74199
	N28°00'00"W	132.00 ft		
PC364			616689.09226	1621699.77174

--
Total Perimeter = 874.35 ft
Area = 40282.1436 Sq. Ft.
Area = 0.925 Acres,